



CRITICAL COMPONENTS WHERE
INTEGRITY IS PARAMOUNT



www.bulwell.com



CRITICAL COMPONENTS WHERE INTEGRITY IS PARAMOUNT FOR

From its world class facility in the centre of the UK, Bulwell Precision Engineers manufactures machined parts, kits, complex assemblies and integrated point of use delivery systems for the aerospace and associated industries.

As part of the Nasmyth Group of companies, a combination of many years of experience means the company is able to deliver top quality products on time, every time, with exceptional levels of customer service.

Core Competence

Bulwell's core competences are in the machining of materials including all steels, titanium, aluminium, nimonics and various other super alloys. This is achieved by utilising two, three, four and five axis machine technology and the design and manufacture of complex assemblies, sub-assemblies and kits. Bulwell is proud of its reputation for developing leading edge machining, programming and fixturing techniques, as it is this that keeps the company at the forefront of its industry. Three years of investment in developing manufacturing methodology, programming capabilities and 5 axis machining has now given Bulwell the leading edge in machining complex components. Our team now know, anything can be machined from solid.

Unique Value Adding Features

In addition, by using other specialist in-house technologies and processes - including fine tolerance grinding, water jet cutting, heat treatment, anodising, NDT, paint and plasma spraying -

Bulwell is able to maintain a competitive advantage in terms of quality, lead-time and cost.

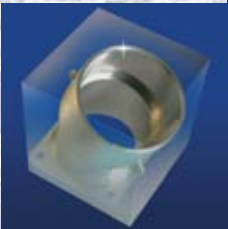
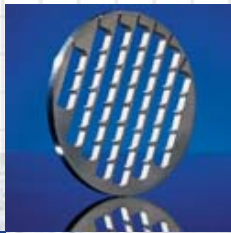
Manufacturing Technology and Control

The company has continued to invest over the last five years in new plant and equipment. This has resulted in the creation of a state-of-the-art machining facility equipped predominantly with Mazak and Nakamura turning and machining centres. Programming and 3D modelling is operated by Catia V and Mastercam, both of which can be provided either offline or at the machine side. This enables Bulwell to work seamlessly between design, production and its customers, providing efficient and accurate transfer of data and information. This gives an undoubted performance advantage in terms of turnaround time, cost and quality of product off the machine.

Cellular Manufacture

The machining facility is managed efficiently by using dedicated capacity cells, which have the responsibility for a number of parts or a complete customer portfolio. Within each of these cells, customer demand dictates the work order and cell loading. Individual cells then work together when product crossover demands.

Through the management team utilising the latest techniques in machine tool engineering and ERP software, Bulwell





FROM BULWELL PRECISION ENGINEERS

Precision Engineering is also able to provide customers with flexible capabilities and capacities.

Integrated solutions

Bulwell Precision Engineers is an established manufacturer of equipment for the aerospace, defence and associated industries. As other suppliers strive to provide increased added value to what they offer, Bulwell

Precision Engineers has developed its own portfolio of products and services to provide its customers with a total service offering.



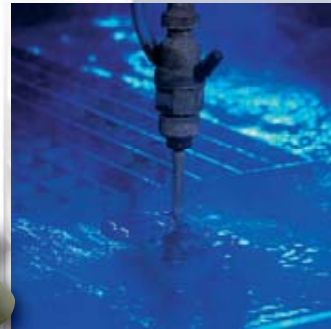
Within the company, product lines have been developed to add to the existing capabilities in design, manufacture, kitting, assembly, final testing, repair and overhaul.

Engineering Support

A dedicated engineering team manages the technical requirements of the manufacturing facility. It also sustains customer programmes from order placement through to delivery and ongoing support. A total design service is also offered. This helps reduce delays on parts development by using

engineering and design for manufacture techniques simultaneously; providing a complete engineering service from conceptualisation to production and ongoing improvements.

Largely project based, the team is able to draw upon a wide range of skills and tools to assist it. Manufacturing engineers are trained and experienced on a number of CAD packages and have the ability to interface with all major customer design systems. These, amongst other skills, ensure projects are delivered on time and on budget.





Quality and Continuous Improvement

Bulwell's commitment to quality is unrivalled within the aerospace industry. To meet some of the most stringent quality requirements in the world, products undergo sophisticated inspection and testing techniques. In order to maintain these high standards, the company has developed its quality management system in line with the latest aerospace standards. The emphasis within the business is to achieve 'in built quality' to all activities.

In addition, a highly focused improvement programme, involving the introduction of many cutting edge manufacturing methodologies and staff skills and knowledge from across the business, has resulted in major improvements in the following key areas:

- Major reductions in set-up times
- Reduced customer lead-times
- High levels of utilisation and on time deliveries
- Quality in-built

Supply Chain

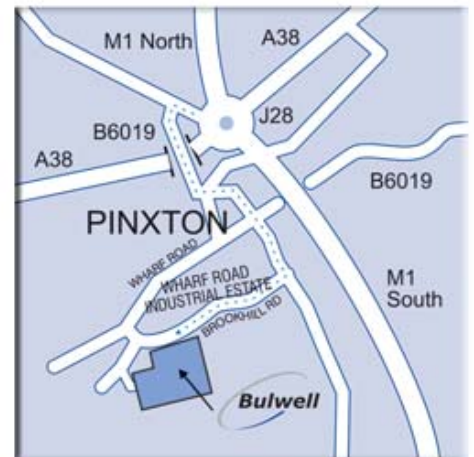
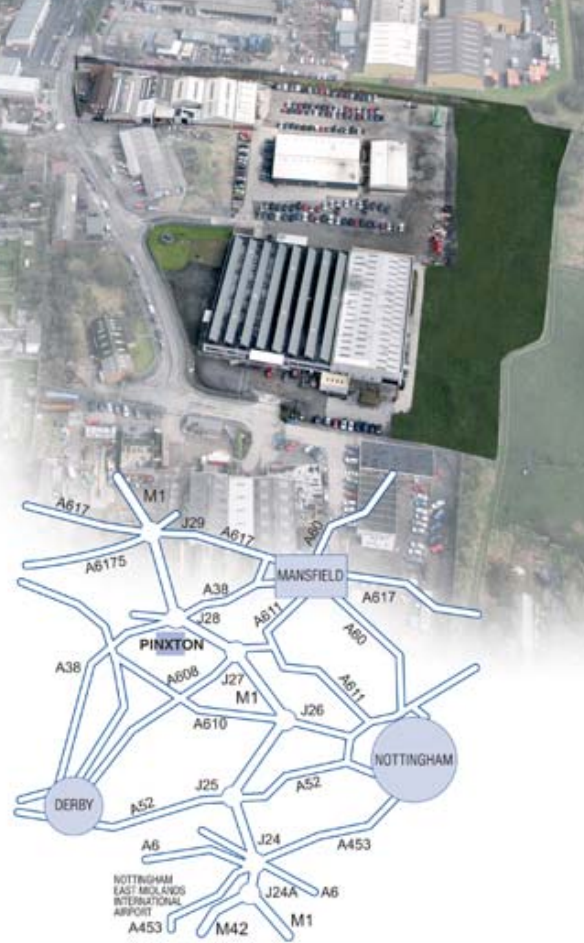
Group wide purchasing activities has led to a major performance improvement in the management of the supply chain. Many materials and components are placed on long term agreement and, in addition, suppliers are closely involved in internal activities to improve the business. The supply chain's commitment to the Bulwell ethos of continuous improvement and quality gives the company the ability to vary capacity and capability as required.

The continued development of the logistics operation, including the installation of state-of-the-art carousels and a consignment tracking system, allows Bulwell to provide customers with accurate information and timely product delivery to any worldwide destination.

Future

So what does the future hold?

- Further investment in new machine tool technology
- Establishment of a lost cost economy manufacturing facility
- Continued creation of dedicated manufacturing cells with capacity ownership
- Commitment to risk sharing partnerships with our customers



Bulwell Precision Engineers Ltd

Wharf Road Industrial Estate
 Pinxton | Nottinghamshire
 NG16 6LE | England
 Tel: +44 (0)1773 810 102
 Fax: +44 (0)1773 861 644
 enquiries@bulwell.com
 www.bulwell.com